



SOCIAL SERVICES
RECREATION AND PARKS: AREA 4

Denisha Anand

Site Manager

T: 021 444 8849 E: Denisha.Anand@capetown.gov.za

MONTHLY REPORT PREPARED FOR THE PRINCESS VLEI WETLAND PARK

Report 003 for the period: 1st Dec 2017-31st Jan 2018

CONTENTS

1. FIELDWORK/CONTRACTS
2. INVASIVE VEGETATION MANAGEMENT
3. FIRE MANAGEMENT
4. REHABILITATION
5. INFRASTRUCTURE MANAGEMENT
6. FAUNA MANAGEMENT AND OBSERVATIONS
7. BIOPHYSICAL MONITORING – VEGETATION
8. BIOPHYSICAL MONITORING – WATER AND SOIL
9. ENVIRONMENTAL EDUCATION AND OUTREACH
10. SECURITY ON SITE
11. GENERAL INFORMATION/OBSERVATIONS/MEETINGS
12. ITEMS TO BE ADDRESSED IN THE UPCOMING MONTHS



Funded by the **Hans Hoheisen Charitable Trust** in partnership with the **City of Cape Town** and the **Cape Town Environmental Education Trust (CTEET)**.



CTEET
Cape Town Environmental
Education Trust

This report covers both December 2017 and January 2018 due to December having much less activity on site and the public holidays disrupting the usual work flow on site.

1. FIELDWORK AND CONTRACTS:

- Boom gate installation (see point 5)
- Signage Boards (see point 5)
- Quemic Rangers (see point 10)
- EPWP (see point 2,3,4,11)

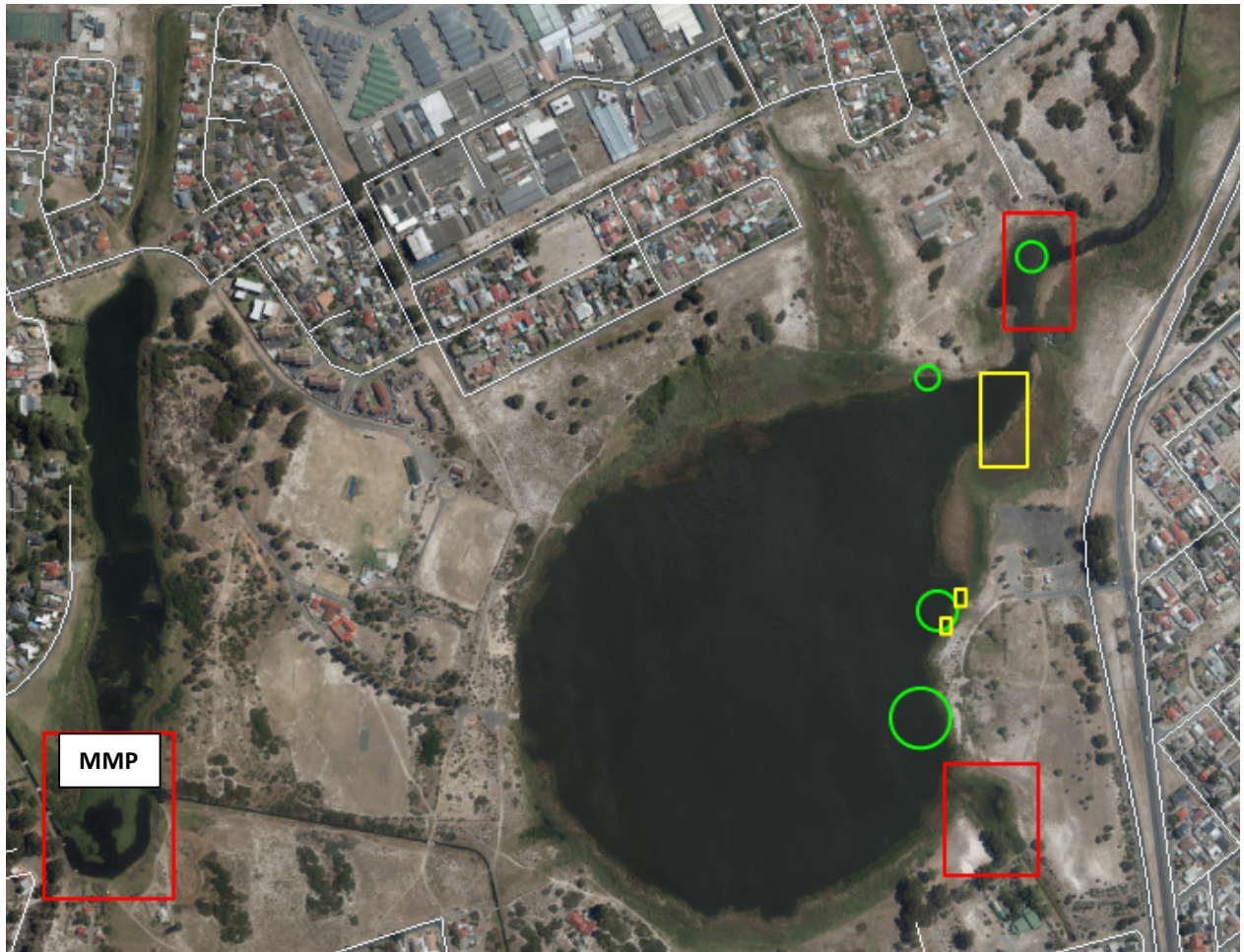
2. INVASIVE VEGETATION MANAGEMENT

Richard Burns has confirmed that a delay has occurred due to the tender not being available on the SAP system yet. Facility management has however confirmed that funds are available for the work load calculated by the IAS unit and will be allocated once the quote is generated.

The training facilitated by Sabelo Lindani on the 30th and 1st Dec was successful and the EPWP staff that attended the training will receive certificates from the CoCT.

The removal of water Hyacinth by our EPWP staff started on the 19th Dec 2017 on the Eastern shore of the Greater Princess Vlei water body and is still being carried out. The strategy to control water Hyacinth on site has been discussed with Talcott Persent from CoCT and it has been confirmed that the areas marked in red on the map below will be cleared of alien species and dredged by Talcott's team. The area marked in red that reads MMP, is the 'Pump Station' at Little Princess Vlei that is completely infested with aquatic alien and invasive species. Talcott has confirmed that funds have been allocated to this area along with a Maintenance Management Plan to maintain that particular area. The remaining area of Little Princess Vlei will be cleaned using the weed harvester, which is currently not in working condition and has been out of working order since last year. The delay regarding repairing the machine has been taken up with Southfield depot management and they have confirmed that all necessary requests for repairs have been submitted.

The silt accumulated from the dredging will be placed in the areas marked in green to create shallow zones for our wetland bird species. The yellow blocks are the areas that the EPWP staff will target by hand as well as by using a rowing boat that management is in the process of acquiring through the Princess Vlei Forum environmental committee.



Above: A map indicating the areas that will be cleared by Talcott Persent in red, the areas selected as shallow zones for wetland birds in green and the areas marked in yellow are the targets for the EPWP staff for the water Hyacinth clearing strategy.

3. FIRE MANAGEMENT

EPWPs continue to clean litter that has been illegally dumped on site and remove any debris left behind by informal settlement structures. Dead branches and plant material has been cut back and pathways cleared. The areas marked in yellow have been cleared and continue to be maintained by the EPWP staff.



Left: A map indicating the areas, marked in yellow, that have been cleared and continue to be maintained by the EPWP staff

4. REHABILITATION

A second training session has been arranged by management with Julia September from biodiversity management. A series of workshops will be held over 3 days. This training is aimed at the rehabilitation work scheduled on site.

Day 1: In the field, proposed site is Zeekoevlei.

Day 2: Propagating what they have collected.

Day 3: Working in the nursery at Westlake.

The aim is to provide all EPWP staff on site with skills that promote the conservation of biodiversity and to assist with skills development as part of the CoCT's strategy to increase its skilled labour force through the EPWP programme

Management met with Alex Lansdown on the 24 January regarding the quote for the restoration management plan for Princess Vlei to look at cutting the costs to accommodate Princess Vlei Forum's budget for the project. The quote has been decreased and funding will be sourced via the forum and possibly by the CoCT as facility management is in agreement with the proposed plans for the site.

Seeds have been collected on site as advised by Alex Lansdown. Storage has been allocated to Princess Vlei at the seed storage facility at Kirstenbosch. The following species

were collected, *Sutherlandia frutescens*, *Pelargonium incana*, *Salvia africana* and an unknown species. The seeds will be cleaned and stored until needed.



Left: Seeds collected at Princess Vlei Wetland Park for the reseedling project on site.

EPWPs continue to clear alien species on site to prepare for the planting process.

5. INFRASTRUCTURE MANAGEMENT

A permanent boom will replace the temporary boom at the Little Princess Vlei road adjacent to the Eco Centre. Facility management is in the process of finalising this.

Print ready PDFs have been created for signage and final editing has been submitted. The icon board was temporarily erected on the Eastern shore for the holiday season in order for law enforcement to issue fines if necessary.



Left: Temporary icon signage erected on the Eastern shore, Princess Vlei.

On the 17th Jan, management met with the ward councillor as well as the PVF to discuss progress on site at the sub council meeting. A model of Princess Vlei was presented by the forum and their final say regarding the 5km walkway route was presented. The forum will be erecting a simple bridge that will allow people to cross the Southfield canal, creating a full circuit at Princess Vlei.

On the 31st Jan, contractors attended a site meeting regarding the installation of new braai areas. A total of 6 new braai areas will be built at Princess Vlei.

6. FAUNAL MANAGEMENT AND OBSERVATIONS

Four adult and three juvenile mole snakes as well as one Olive House snake were spotted on site during December. The rangers on site were asked to relocate an adult Olive House snake from the Eco centre to the area adjacent to the Greater Princess Vlei slipway. The relocation was motivated by the holiday programme taking place at the Eco Centre and children were occupying the space close to the snake.



Left to Right: Rangers and site staff attempting to catch the snake for relocation. Children at the holiday programme were excited to see the snake. The snake appeared to be an Olive House snake.

A grey heron, great white pelican and 2 kingfishers were spotted during bird observations around the vlei amongst the many other species that frequent both Greater and Little Princess Vlei.

Egyptian geese are being killed by what management is assuming may be stray cats or dogs that roam on site. This is being looked into by management.

7. BIOPHYSICAL MONITORING – WATER AND SOIL

Water quality for Aug to Dec 2017:

E.coli levels /100ml:	Aug	Sep	Oct	Nov	Dec
Princess Vlei centre	220	12	200	24	9
Princess Vlei near outlet weir	160	18	300	46	33
Southfield canal at Victoria road	1300	21000	3700	9400	500

Management has been added to scientific services mailing list and receives the monthly bacteriological report by the department of water and sanitation.

Water quality was concern in the Greater princess Vlei due to the history of pollution on site and also due to the informal settlement bordering the Southfield canal. The results look promising and fall with in the region that allows semi-contact water sports. Management will

however advise that recreational users steer clear of the Southfield canal area when using the water body.

8. BIOPHYSICAL MONITORING – VEGETATION

Metalasia muricata shrubs have been cut back in the area adjacent to the cricket field on site due to litter accumulating in that area, it was then found that people were sleeping in those bushes. No report of their return has been reported to management since the cutting back of the shrubs in that area.

On the 8 and 9th Jan vegetation cutting and trimming took place along the m5 at the retreat boarder due to litter accumulation and illegal dumping happening in the over growth of the dune strandveld in that area.

The vegetation on site is extremely dense in some areas and management is targeting each area based on safety risks and the scope for illegal dumping and settlement erection.

9. ENVIRONMENTAL EDUCATION AND OUTREACH

On the 12th Dec management assisted the eco centre staff with their holiday programme as part of an environmental education agreement between both parties.

The children were taken on a guided walk around Princess Vlei and had a show and tell session with one another afterwards. They collected things from the vlei that they presented to their peers.



Left to right: Children from the holiday programme presenting their veld collections, management talking to the children about the importance of wetlands, management with the children under the Bluegum stands at the vlei, children on the Eastern shore getting ready to present their collections to one another.

PRINCESS VLEI: PROTECTED BIODIVERSITY AREA, MANAGEMENT REPORT, Dec/Jan 2018

On the 19th December management arranged a WWF outreach workshop with the CoCT holiday programme children. The workshop was facilitated by WWF interns. The interns facilitated a propagation workshop with the children and lunch and refreshments were provided by the interns.



Left to right: WWF interns, children looking for sites to propagate from, interns guiding the children around site, plants propagated by the children using 2L bottles as pots.

Princess Vlei management has created an environmental education programme and has partnered with Lotus River High School to co-ordinate and facilitate a Princess Vlei Eco Club on a Tuesday from 15:00 to 16:00. A space has been allocated at the school for the class to take place and once a month learners will come to Princess Vlei and an activity will be hosted on site.

The first class was on the 30th Jan. The learners have started activity where they will create a map of Princess Vlei based on their own vision of the space. Management hopes to create a sense of custodianship amongst the learners as their vision for the vlei will be transformed into small projects done on site.



Left to right: Eco club learners creating their map using art resources provided by the Princess Vlei forum

Levana Primary school has come on board as a partner school and will be one of Princess Vlei's stepping stone schools. Princess Vlei management along with the Eco club will be creating indigenous stepping stones at various schools in the area to facilitate movement of pollinators, small mammals and birds in the area. Only schools with an established eco school programme will be considered for this programme.

10. SECURITY ON SITE

Quemic rangers are still on site and continue to have a positive impact on safety and security on site. Facility management will continue to prioritise the rangers until further notice.

11. GENERAL INFORMATION/OBSERVATIONS/MEETINGS

- 8 January: Princess Vlei Forum: Mancom meeting
- 23rd January: Environmental Career day: Rondevlei
- 23rd January: Environmental management plan meeting with PVF
- 17th January: Sub council meeting
- 16th January: Eco Club meeting with Lotus River High School
- Three EPWP staff were dismissed on site and one left voluntarily. Two new EPWP staff have been placed on site. A total of 7 EPWP staff members are present on site, the remaining 4 will be placed once contracts have been finalised.
- The EPWP team worked over weekends during the December period to ensure that littler was under control on the Eastern Shore.
- Park Run is being proposed as a possible event that will be held at Princess Vlei, CoCT as well as PVF is on board. The necessary plans are being put into place in order to accommodate this event. The event is expected to draw 800+ people to Princess Vlei.

12. ITEMS TO BE ADDRESSED IN THE UPCOMING MONTHS

- Soil sampling to be done to establish pH variability on site
- Baseline data collection strategy for Western Leopard Toad population on site to be established.
- Environmental; management plan draft to be finalised and submitted to CoCT.